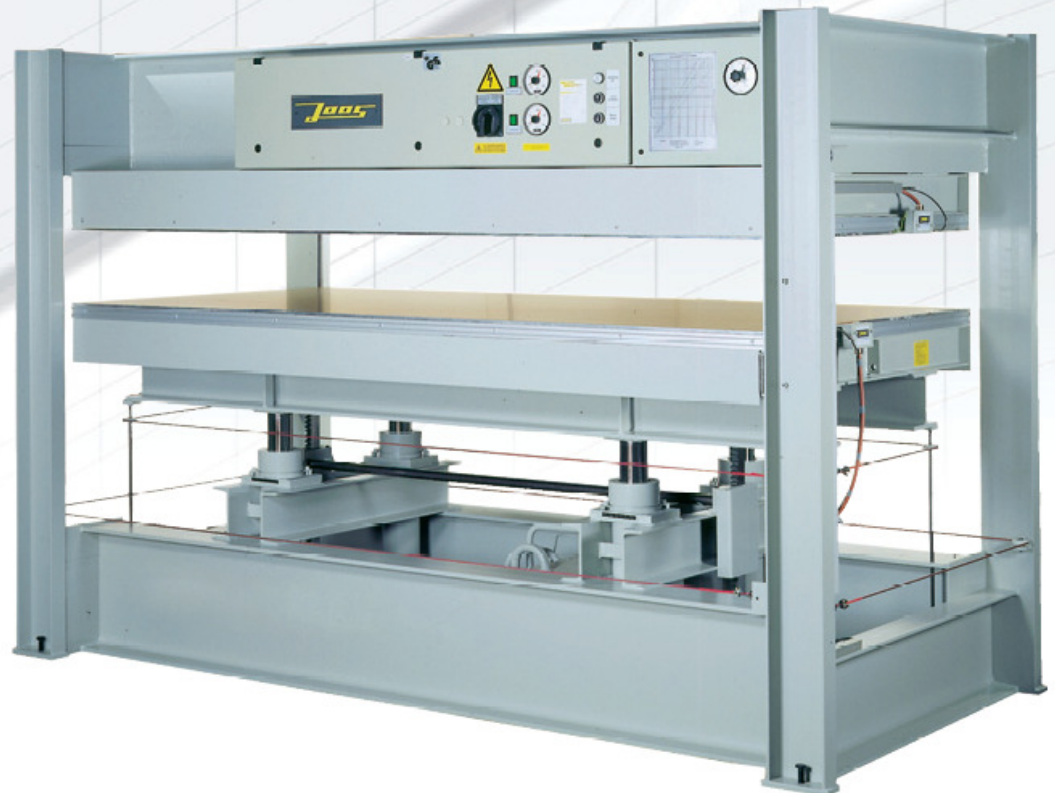


Joos-Basic-Press



Presse per impiallaciatura
con piani elettrici standard Elkom o Busse
sistema di riscaldamento "Ökotherm-Basic"
a risparmio energetico

PRESSEN + TECHNOLOGIE



GOTTFRIED JOOS MASCHINENFABRIK

MISCHI G.
MASCHINEN

Tel 0473 44 63 44 e-mail: info@mischi.it

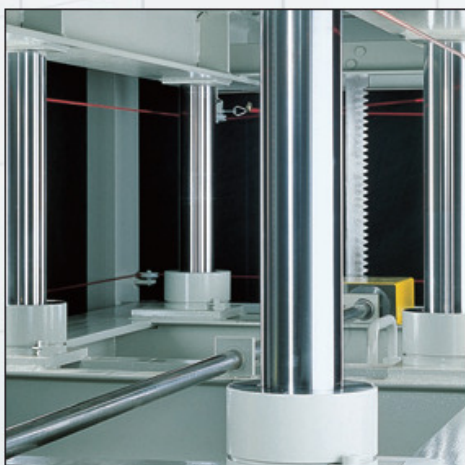
Internet: www.mischi.it



Caratteristiche	Basic 65	Basic 70
Dimensione dei piani	2500 x 1100 mm	2500 x 1250 mm
Pressione nominale	650 kN	700 kN
Anzahl Pressräume	1	1
Cilindri	4 – Ø80 mm	4 – Ø80 mm
Pressione d'esercizio	325 bar	350 bar
Potenza assorbita	1,1 kW	1,1 kW
Tempi di chiusura	13 sec	13 sec
con piani elettrici standard :		
Tempo per riscaldare fino a 90° C	16 min	16 min
Cosumo di corrente/ora	4,1 kW/h	4,0 kW/h
con "Ökotherm-Basic" :		
Tempo per riscaldare fino a 90° C	35 min	35 min
Cosumo di corrente/ora	2,6 kW/h	2,7 kW/h
Dimensioni:		
Lunghezza	2900 mm	2900 mm
Larghezza	1300 mm	1450 mm
Altezza	1920 mm	2030 mm
Peso	2800 kg	2950 kg

The dynamic piston bearing

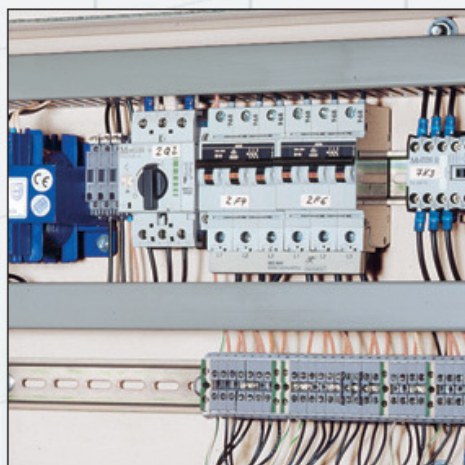
Even when incorrectly loaded, Joos presses offer maximum operational safety. In the unique Joos design the pistons are not bolted to the pressing table, but instead dynamically act on a milled contact surface under the pressing table. A column guide prevents the platen from tilting or being displaced. Synchronous operation of the pressing table is provided by a high precision toothed rack parallel guidance system. This technique provides the pressing table with a full range for expansion in all directions.



The electronic control system

The exact control of commands is the precondition for perfect veneering. Therefore, Joos-Quality-Products are exclusively provided with checked components, such as:

- contactors with periodical contact monitoring in the safety path
- double motor contactor with mutual locking
- automatic circuit breaker with phase monitoring instead of screw type retainer



The gold heating platen

The Joos-Basic-Presses in standard design are equipped with high-quality hard anodised electric heating platens.

The „Gold anodised decor D.B.G.M.“ system renders the surface of the valuable heating platen extremely hard and so offers a long-term protection.

The essential advantages are:

No groove build-up, no metal abrasion, reduced separating agent consumption, shorter operating time, no wear and tear of foil, a higher quality of veneering.

